

WT6000 MFDC

A New Generation in resistance welding



The WT6000 Medium Frequency DC control powered by GEN6 technology offers flexible intuitive programming for customization of your welding process. Combined with the guidance of built in diagnostic tools, the WT6000 will support process control of your resistance welding application.

- ◆ Up to 255 weld programs
- ◆ Multi-language programming
- ◆ Web based programming
- ◆ Free format programming for various applications
- ◆ Configurable I/O
- ◆ Network ready (Weld Gateway)
- ◆ Various I/O connectivity, discrete, device net, Ethernet IP
- ◆ Weld tool efficiency monitoring
- ◆ Weld transformer protection (flux control)
- ◆ Duty cycle of inverter monitoring
- ◆ Laptop or DEP interface for programming and data acquisition
- ◆ Secondary current & Voltage monitoring
- ◆ Oscilloscope output for data analysis
- ◆ 220v-480v 50/60hz operation (600v optional)
- ◆ Programmable output frequency (400-2000 hertz)



WT6000 MFDC powered by GEN6
inverter technology

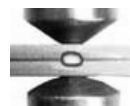
Supported Languages
English, German, French, Spanish, Portuguese, Chinese, Korean, Polish

Welding Technology Corporation

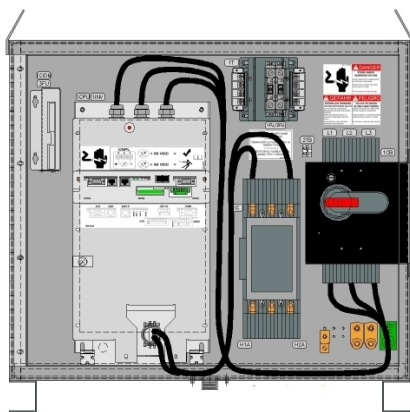
24775 Crestview Court, Farmington Hills, MI 48335 USA

Phone: 248-477-3900 Fax: 248-477-8897 Email: sales@weldtechcorp.com

www.weldtechcorp.com



WT6000 Single pack designs



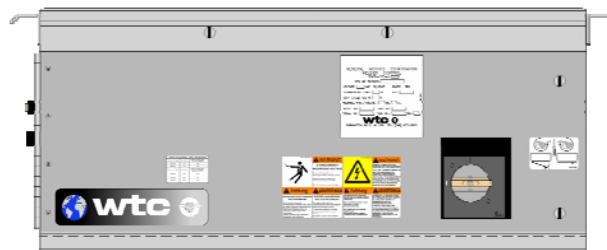
WT60TN
Top mount

WT60TN Top mount MFDC

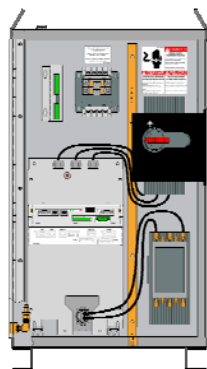
- ⇒ 150 amp, 3 pole circuit breaker with magnetic shunt trip
- ⇒ Size 4 isolation contactor
- ⇒ 250VA control transformer
- ⇒ CIOM module for local I/O
- ⇒ GEN6 inverter rated 600/500 amp water/air cooled @10% duty cycle
- ⇒ Integrated 6000 processor module
- ⇒ Dimensions (24"Hx29"Wx17"D)
- ⇒ Device-net, EIP connectivity
- ⇒ Tip dress control & monitor (Optional)

WT60MN Minipak MFDC

- ⇒ 100 amp, 3 pole circuit breaker with magnetic shunt trip
- ⇒ Size 3 isolation contactor
- ⇒ 250VA control transformer
- ⇒ GEN6 inverter rated 400 amp water/air cooled @10% duty cycle
- ⇒ Integrated 6000 processor module
- ⇒ Dimensions (12"Hx26.5"Wx20"D)
- ⇒ Device-net, EIP connectivity



WT60MN
Minipak



WT600N-A1
Stand

WT600N-A1 Stand MFDC

- ⇒ 150 amp, 3 pole circuit breaker with magnetic shunt trip
- ⇒ Size 4 isolation contactor
- ⇒ 250VA control transformer
- ⇒ CIOM module for local I/O
- ⇒ GEN6 inverter rated 600/500 amp water/air cooled @10% duty cycle
- ⇒ Integrated 6000 processor module
- ⇒ Dimensions (33"Hx20"Wx16"D)
- ⇒ Device-net, EIP or Discrete I/O connectivity
- ⇒ Tip dress control & monitor (Optional)

Welding Technology Corporation

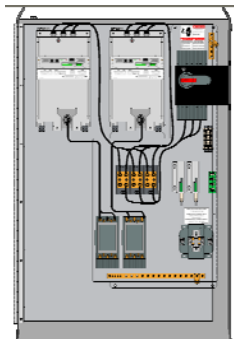
24775 Crestview Court, Farmington Hills, MI 48335 USA

Phone: 248-477-3900 Fax: 248-477-8897 Email: sales@weldtechcorp.com

www.weldtechcorp.com



WT6000 Multi-pack designs



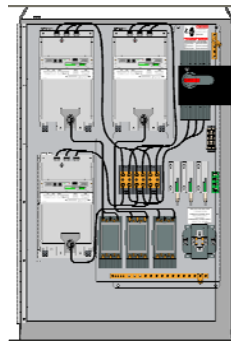
**WT600N-A2
Dual Pack**

WT600N-A2 Dual Pack MFDC

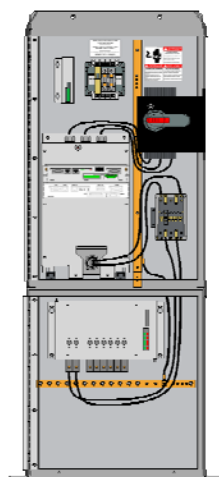
- ⇒ 250 amp, 3 pole circuit breaker with magnetic shunt trip
- ⇒ Two Size 4 isolation contactors
- ⇒ 500VA control transformer
- ⇒ CIOM module for local I/O
- ⇒ Two GEN6 inverters rated 600/500 amp water/air cooled @10% duty cycle
- ⇒ Two Integrated 6000 processor modules
- ⇒ Dimensions (59"Hx39"Wx18"D)
- ⇒ Device-net, EIP connectivity

WT600N-A3 Tri-Pack MFDC

- ⇒ 400 amp, 3 pole circuit breaker with magnetic shunt trip
- ⇒ Three Size 4 isolation contactors
- ⇒ 600VA control transformer
- ⇒ CIOM module for local I/O
- ⇒ Three GEN6 inverters rated 600/500 amp water/air cooled @10% duty cycle
- ⇒ Three Integrated 6000 processor modules
- ⇒ Dimensions (59"Hx39"Wx18"D)
- ⇒ Device-net, EIP connectivity



**WT600N-A3
Tri-Pack**



**WT600N-A13
Cascade**

WT600N-A13 Three Cascade MFDC

- ⇒ 150 amp, 3 pole circuit breaker with magnetic shunt trip
- ⇒ Size 4 isolation contactor
- ⇒ 250VA control transformer
- ⇒ CIOM module for local I/O
- ⇒ GEN6 inverter rated 600amp water cooled @10% duty cycle
- ⇒ Integrated 6000 processor modules
- ⇒ Solid state switching for 3 cascade loads
- ⇒ Dimensions (59"Hx20"Wx18"D)
- ⇒ Device-net, Discrete I/O, EIP connectivity

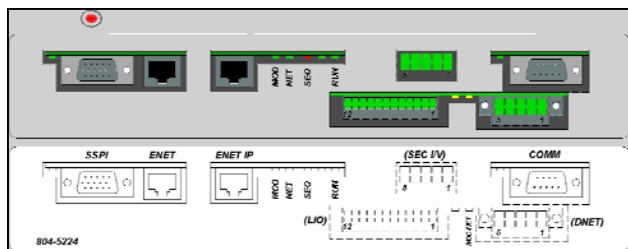
Welding Technology Corporation

24775 Crestview Court, Farmington Hills, MI 48335 USA

Phone: 248-477-3900 Fax: 248-477-8897 Email: sales@weldtechcorp.com

www.weldtechcorp.com





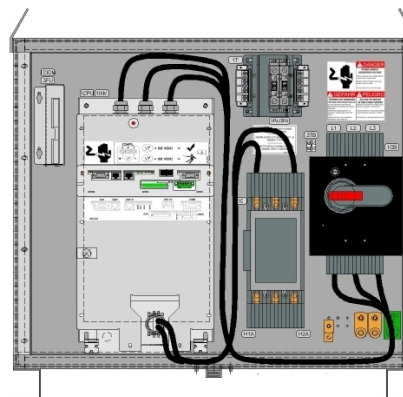
WT6000 Processor

WT6000 connectivity

- ⇒ SSPI port
- ⇒ (2) 100 BaseT Ethernet ports
- ⇒ Local I/O port
- ⇒ Device net port
- ⇒ Secondary current & voltage port
- ⇒ Serial RS485 port
- ⇒ Discrete I/O
- ⇒ Secondary Current & Voltage port

WT6000 supported welding applications

- ⇒ Multi-pack configurations
- ⇒ Cascade configurations
- ⇒ Portable Trans-gun
- ⇒ Portable gun
- ⇒ Seam
- ⇒ Robotic
- ⇒ Projection



WT60TN control

Power Source	
Voltage:	3-Phase AC 220V-480V (± 10%)
Line Power Frequency:	50/60Hz (Automatic Selection)
Alternate Configuration:	Optional: 575V (± 10%)
Output Frequency:	1,200 Hz (Capable Range = 400Hz - 2,000Hz)
Output Current at 10% Duty Cycle:	600/500 amps, water/air cooled
Device Type:	IGBT
Power Consumption:	70VA (Idling condition)
Processor	
Weld Processor:	WT6000 Integrated
I/O Protocol:	Ethernet IP 10/100 BaseT
Optional I/O Protocol:	Device Net, Discrete
Onboard Inputs:	2 x 24VDC
Onboard Outputs:	3 x 120VAC
Number of weld schedules:	255
Number of steppers:	32
Processor Storage Type:	F-RAM (No Battery Required)
Weld Processor Languages:	English, French, German, Spanish, Portuguese, Chinese, Korean, Polish

Monitoring and Control Functions	
Firing Control:	Fixed Frequency, Pulse Width Modulation
Firing mode:	Primary Constant Current Secondary Constant Current Voltage control
Primary Current Range:	20A to Rated Current Level
Primary Current Accuracy:	± 1% Setting, ± .5% Repeatability
DC Bus Voltage Measurement Accuracy:	± 1% Setting, ± .5% Repeatability
Secondary Current Accuracy:	± 2% Setting, ± 1% Repeatability
Secondary Voltage Accuracy:	± 3%
Secondary Resistive Accuracy:	± 3%
MFDC Transformer Flux Protection:	Included
Digital Scope Function:	1 MHz Equivalent Uploads to PC
Duty Cycle Protection:	Monitors Inverter and Weld Transformer Duty Cycle
MFDC Weld Transformer Monitoring:	Diode Monitoring
Power Consumption:	70VA (Idling condition)

Optional Devices

- ⇒ Data Entry Panels (DEP100,300)
- ⇒ Weld Interface laptop software
- ⇒ Weld Gateway Network software

Patents pending

Welding Technology Corporation

24775 Crestview Court, Farmington Hills, MI 48335 USA
 Phone: 248-477-3900 Fax: 248-477-8897 Email: sales@weldtechcorp.com
 www.weldtechcorp.com

